

WELCOME

TO THE LUNG CANCER INITIATIVE SUMMIT GREENSBORO, NC



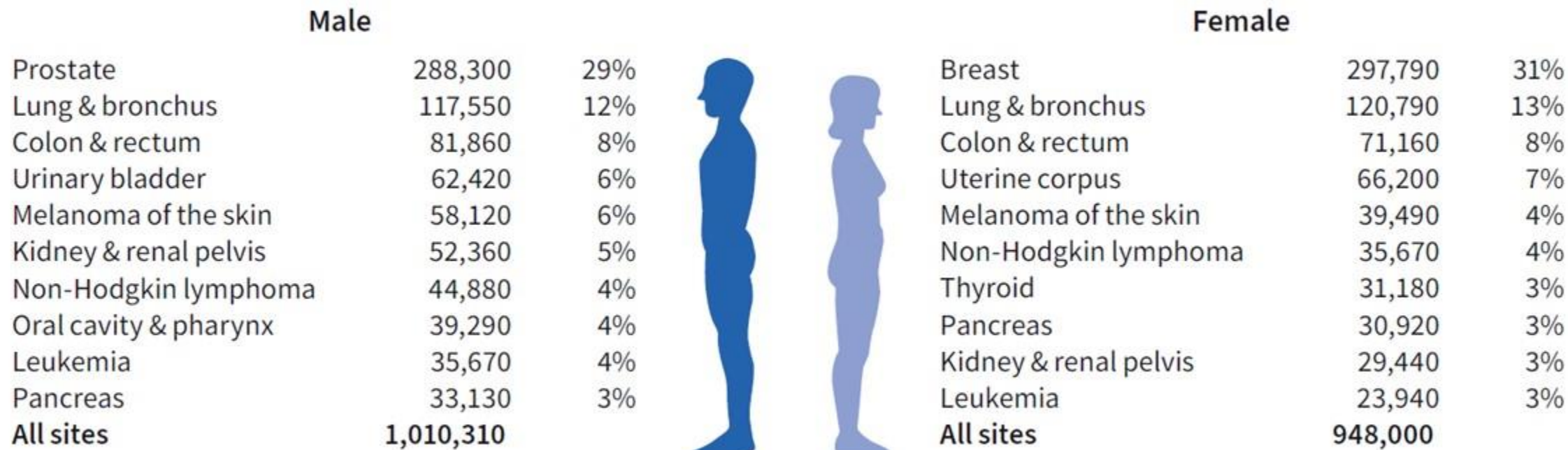
Mohamed Mohamed, MD, PhD
Thoracic Medical Oncologist
Cone Health Cancer Center
Greensboro, NC

Introduction

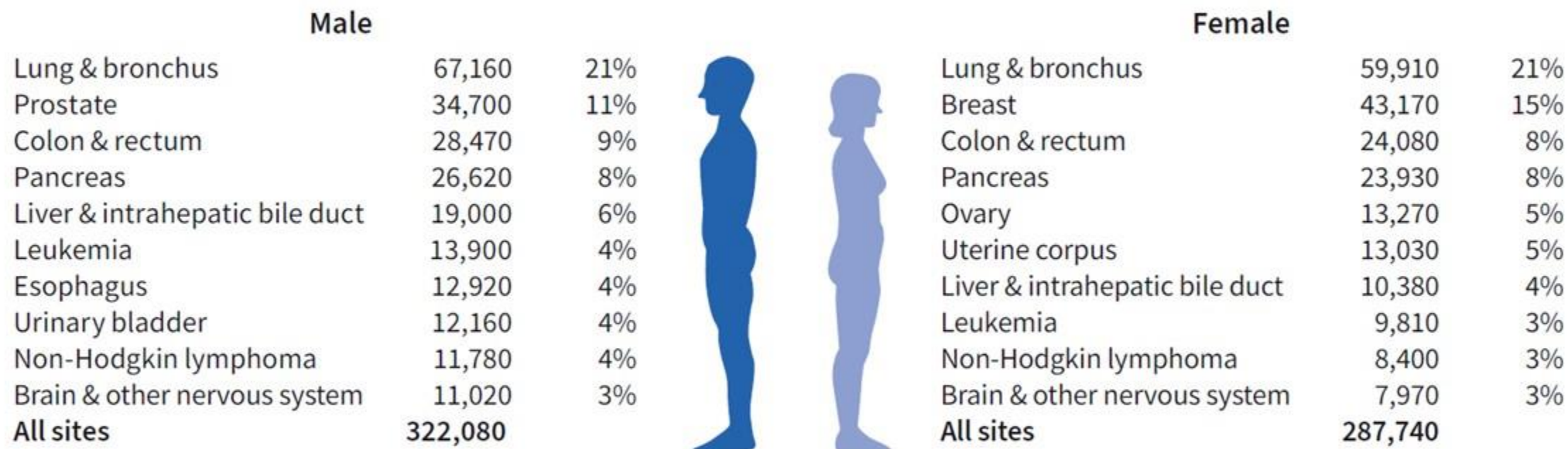
Lung cancer is a formidable adversary, but it is a battle that we are committed to fighting with unwavering resolve. As oncologists, we have witnessed the strength of the human spirit in the face of adversity. We have seen patients who defy the odds, who embrace life's uncertainties, and who find the courage to confront their fears head-on.




Estimated New Cancer Cases in the US in 2023



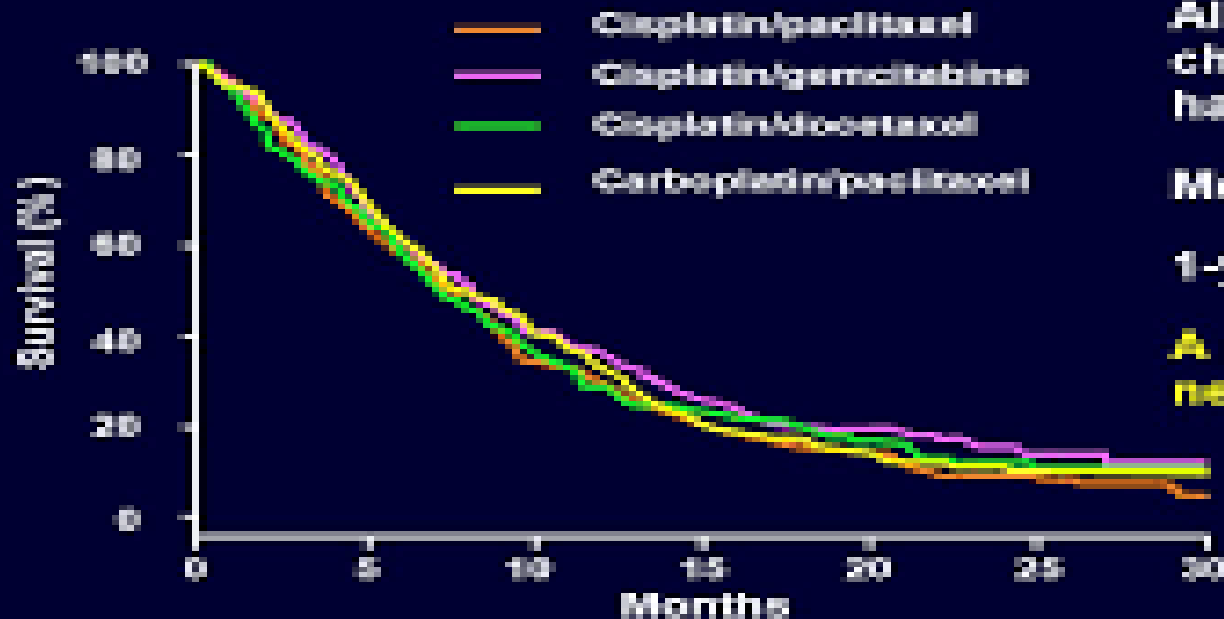
Estimated Cancer Deaths in the US in 2023



A vertical bar on the left side of the slide, transitioning from orange at the top to purple at the bottom.

To our patients, I want you to know that you are not alone in this fight. You are the heart of our mission, the driving force behind our research, and the embodiment of the hope that fuels our efforts. Your courage, your determination, and your willingness to stand up to this challenge inspire us every day.

Cytotoxic Chemotherapy Produces Limited Benefit in Stage IV NSCLC



All recent randomized chemotherapy studies have similar results

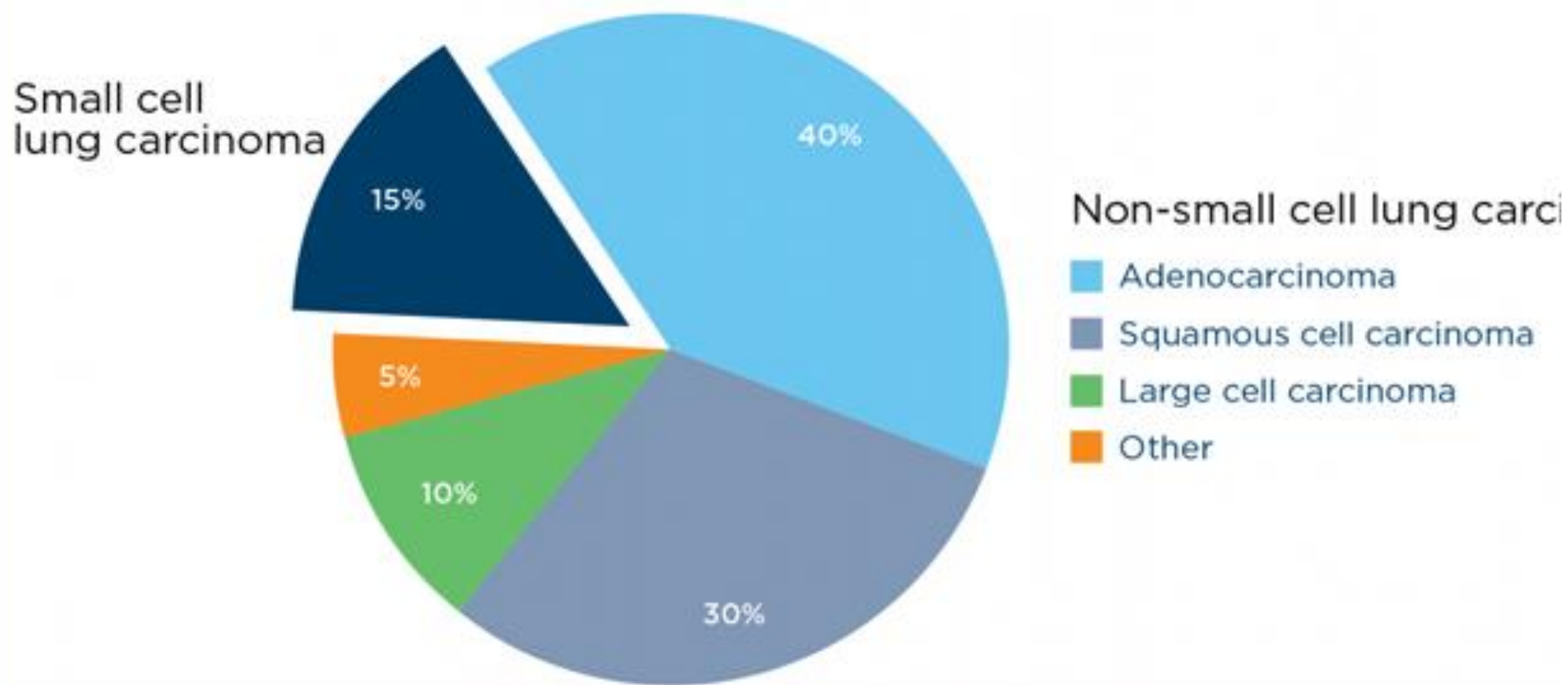
Median survival: 8 mo

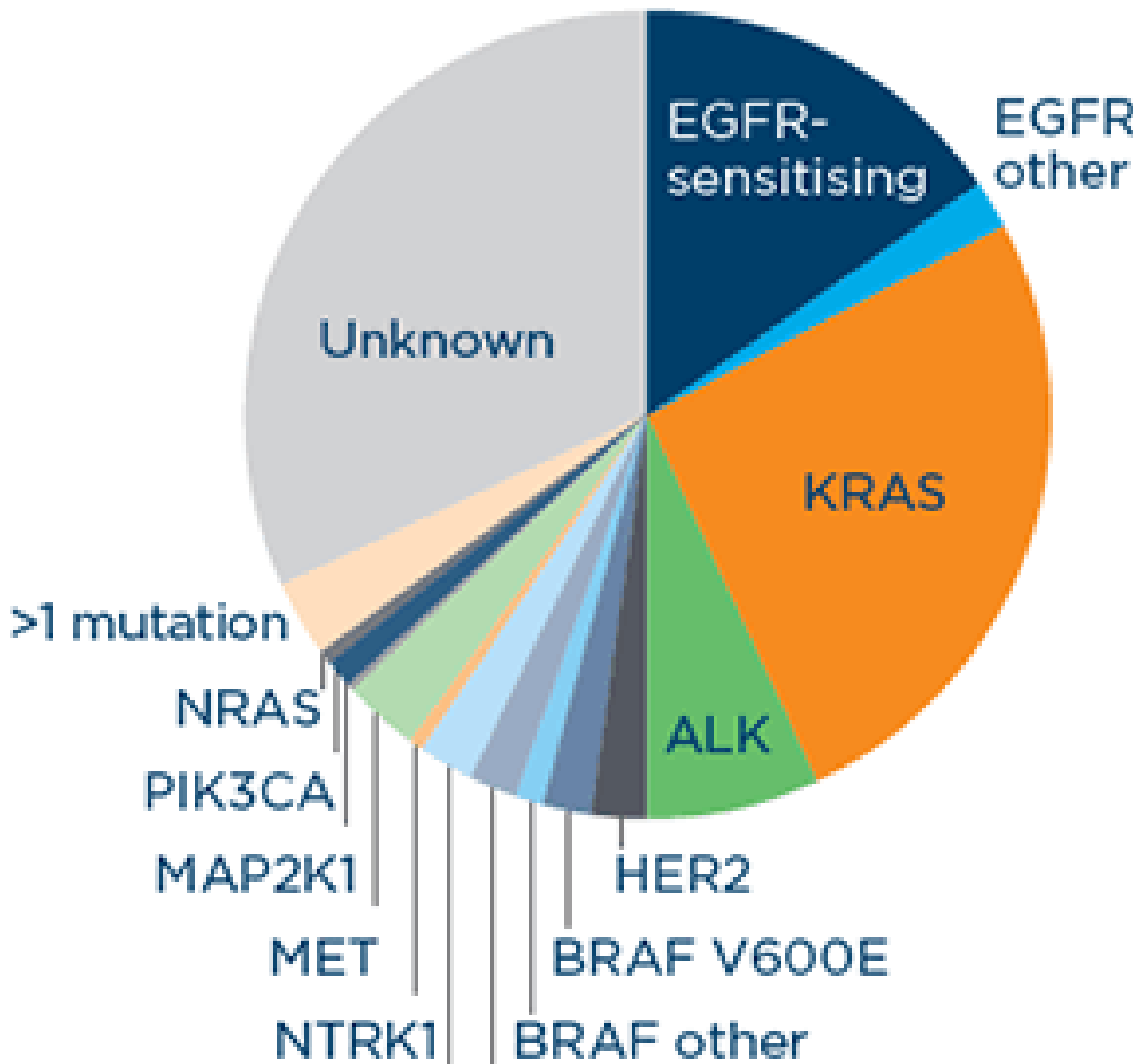
1-y survival: 34%

A paradigm shift is needed!

Adapted from Schiller JH et al. *N Engl J Med*. 2002;346:92, with permission.

TYPES OF LUNG CANCER BY HISTOLOGY

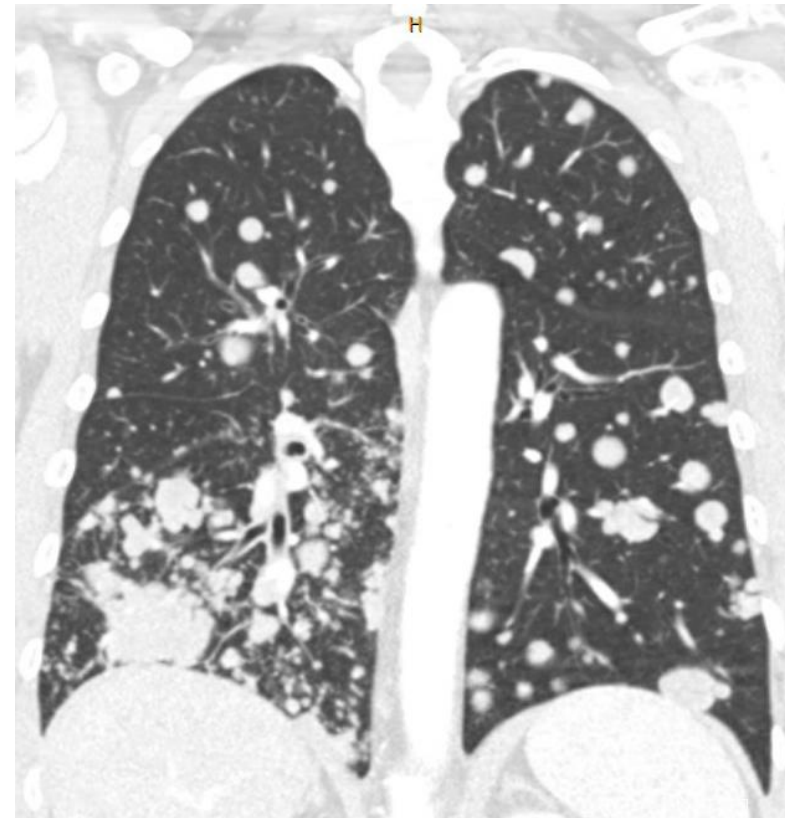
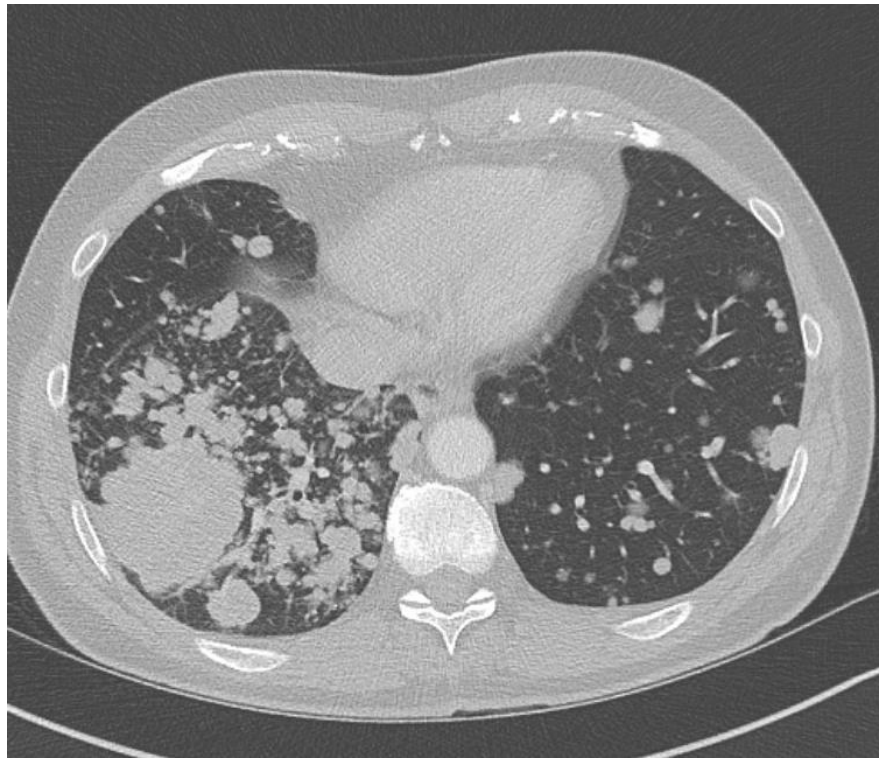




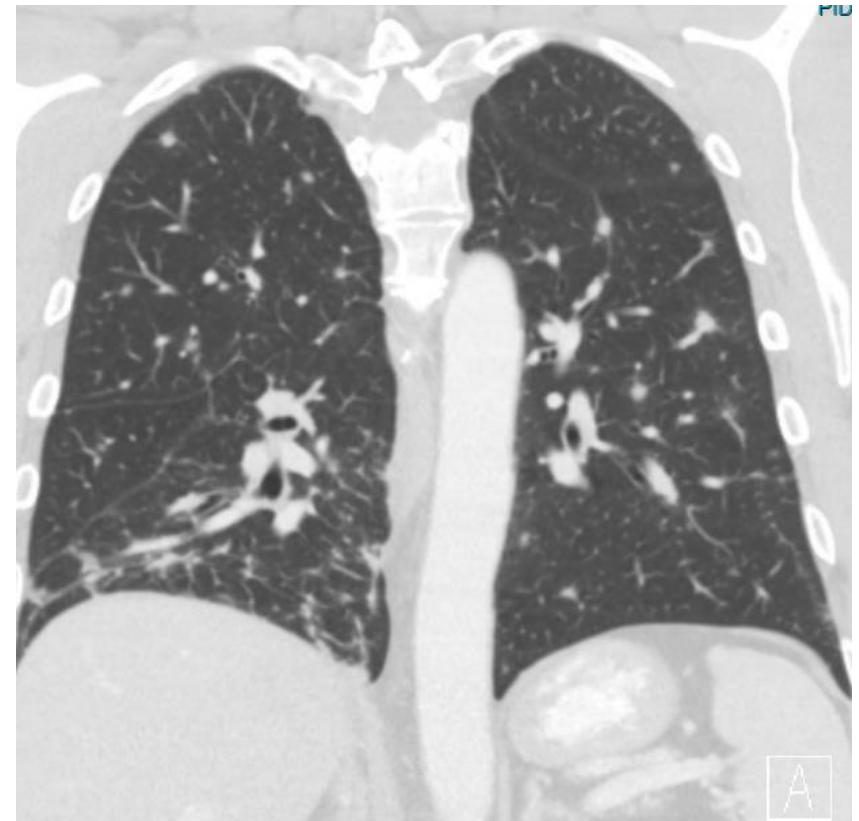
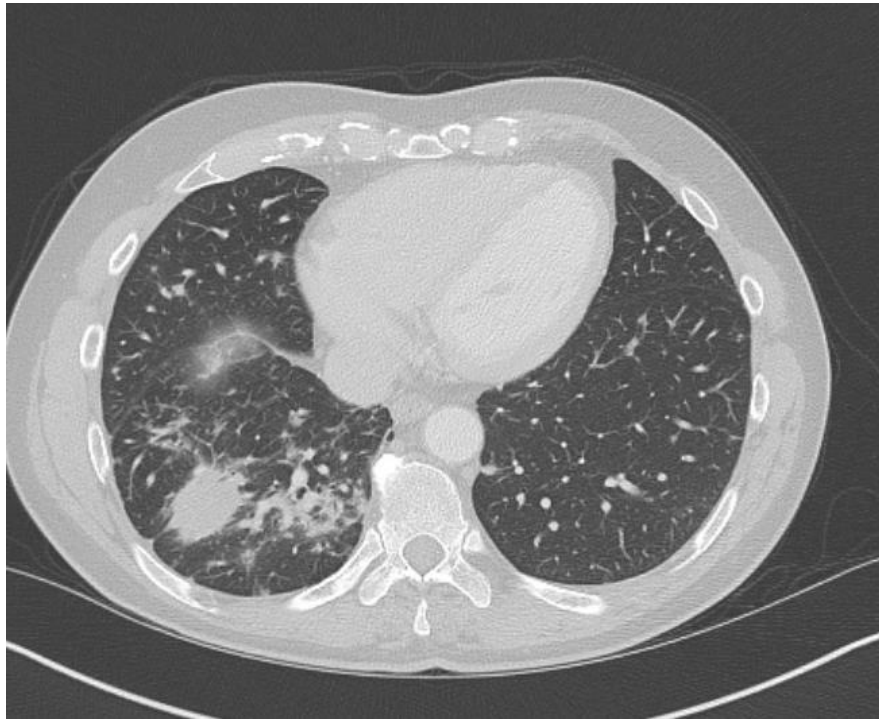
lung adenocarcinoma

EGFR-sensitizing	15%
EGFR other	2%
KRAS	25%
ALK	7%
HER2	2%
BRAF V600E	2%
BRAF other	1%
ROS1	2%
RET	2%
NTRK1	0-5%
MET	3%
MAP2K1	0-5%

56 YOM Never Smoker with stage IV NSCLC, Adenocarcinoma and EGFR mutation at Presentation



56 YOM Never Smoker with stage IV NSCLC, Adenocarcinoma and EGFR mutation at 6 wks after Osimeritinib

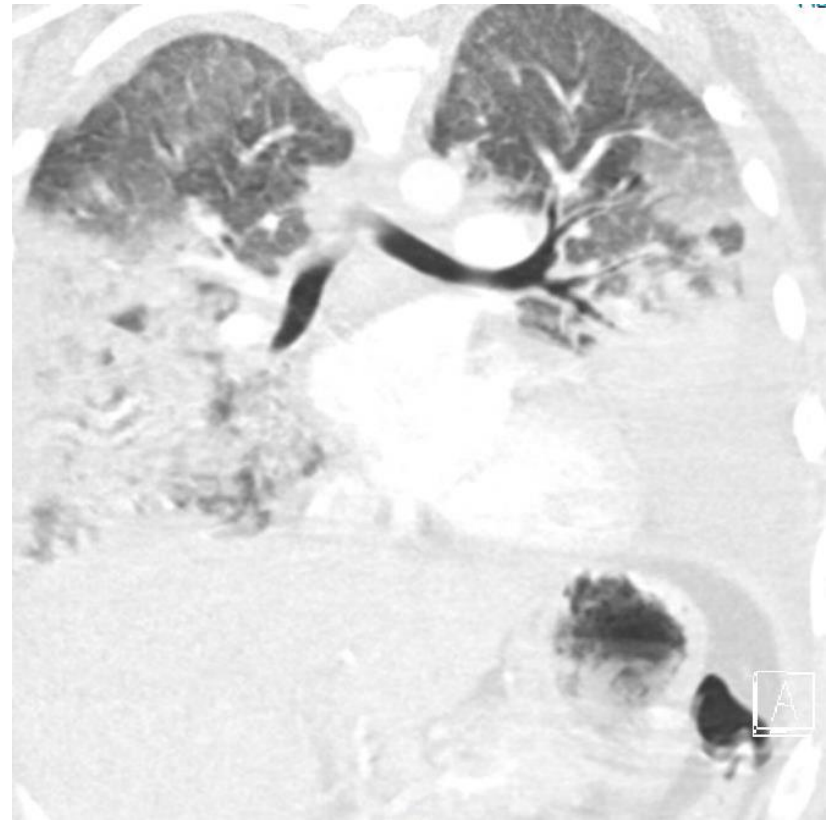


32 YOF Never Smoker with stage IV NSCLC,
Adenocarcinoma and ALK Gene Translocation at
presentation

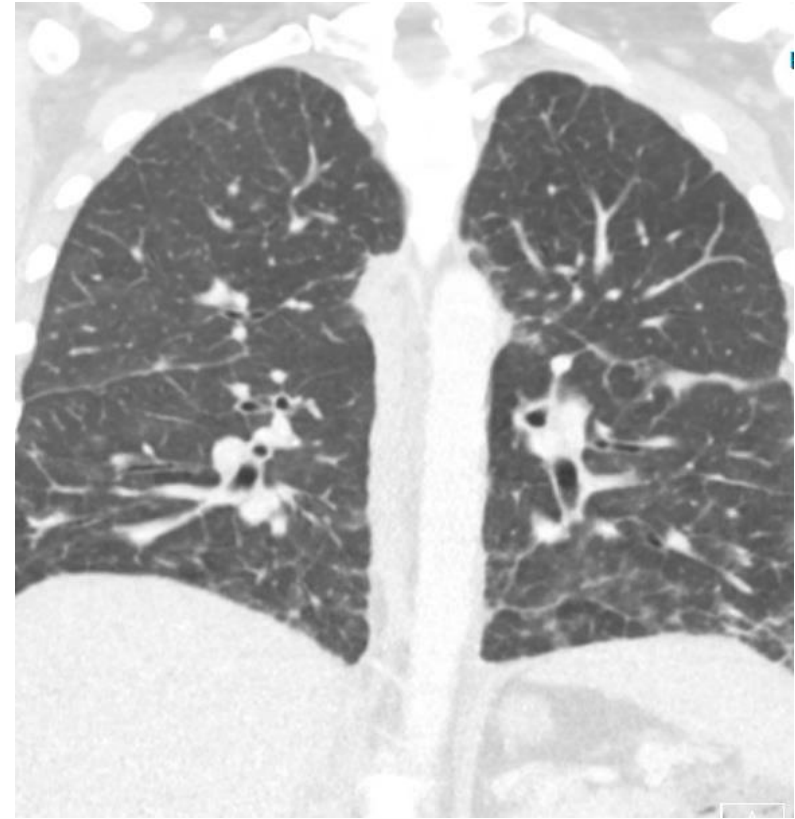
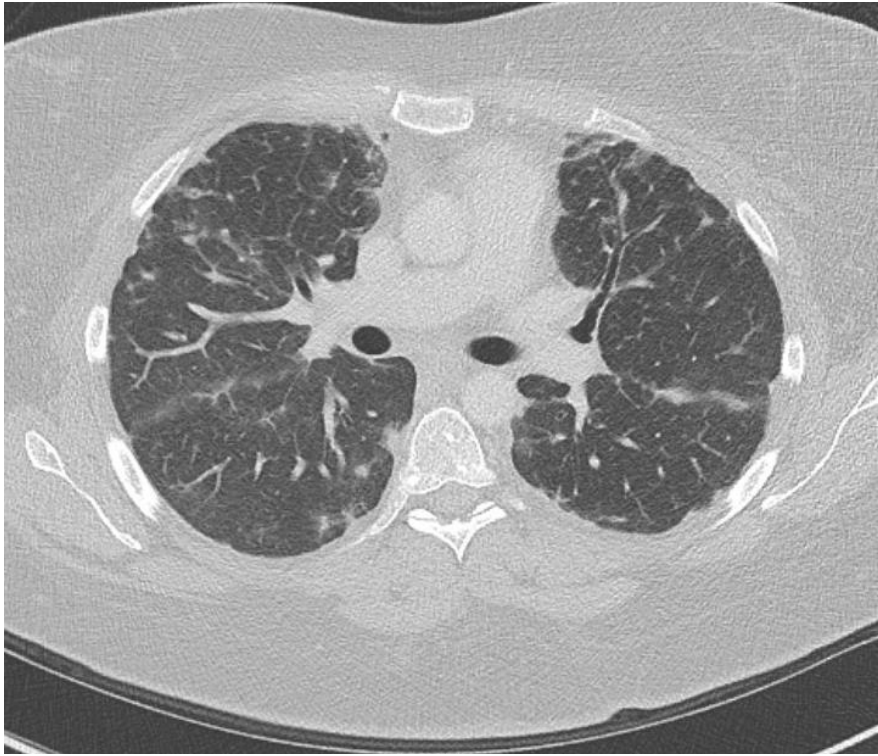
+

•

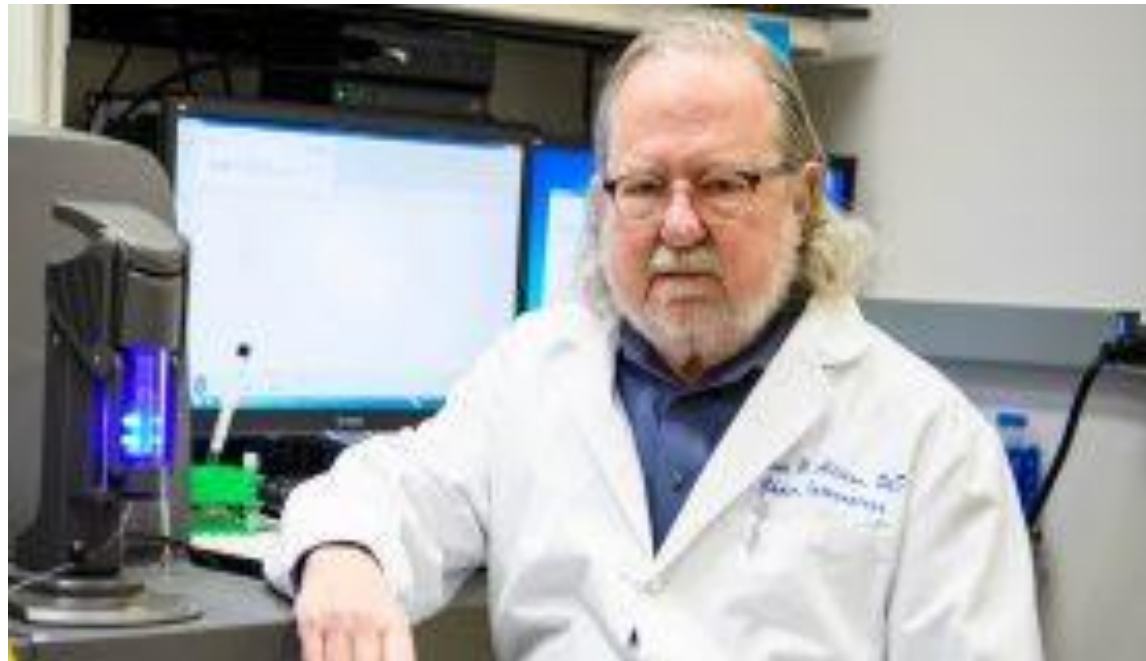
○



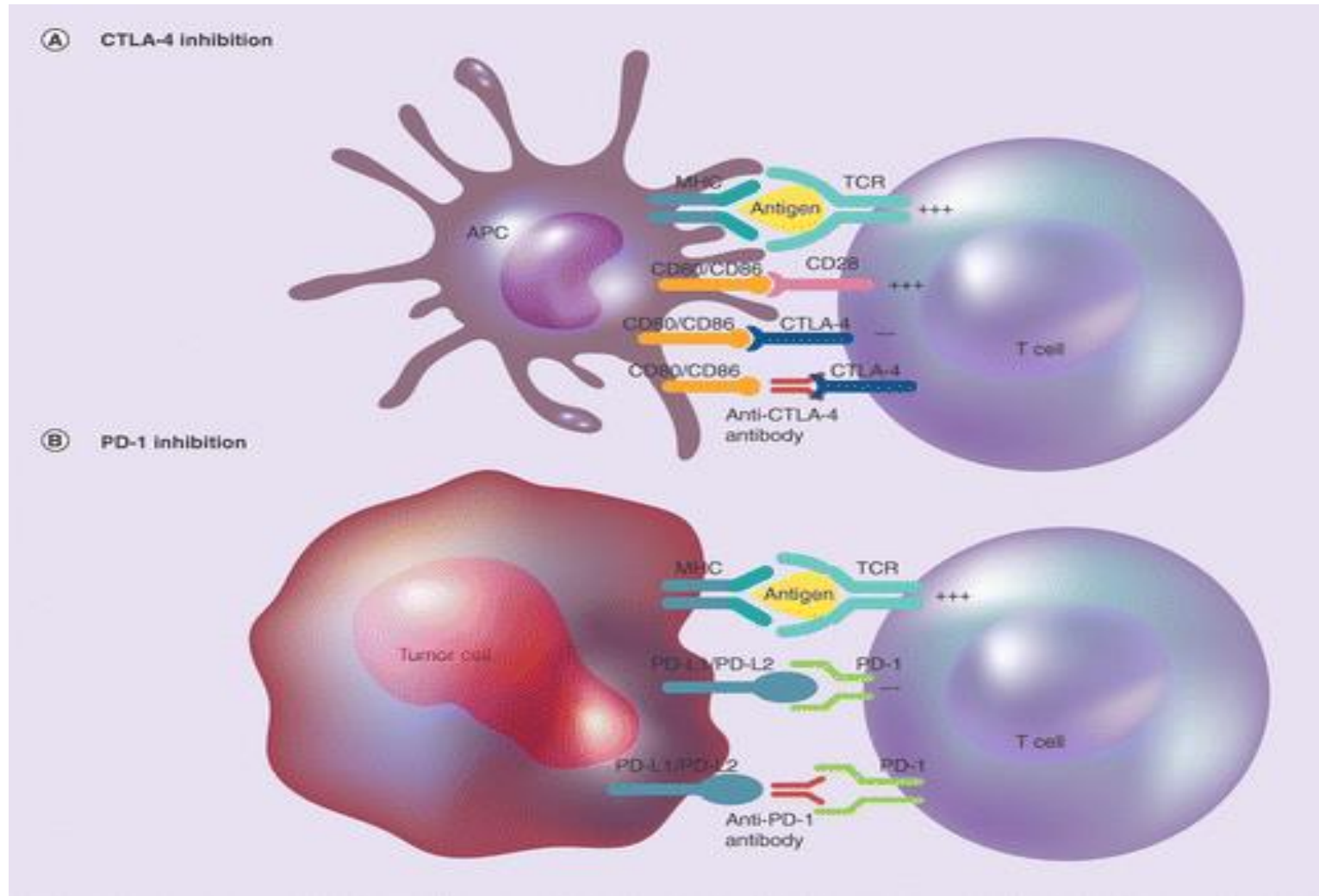
32 YOF Never Smoker with stage IV NSCLC, Adenocarcinoma and ALK Gene Translocation 6 wks after Alectinib treatment



NOBEL LAUREATE **JIM ALLISON, PH.D.**,
INVENTED IMMUNE CHECKPOINT
BLOCKADE **IMMUNOTHERAPY** BY BLOCKING
THE CTLA-4 PROTEIN ON T CELLS, FREEING
THOSE KILLER IMMUNE CELLS TO ATTACK
CANCER.

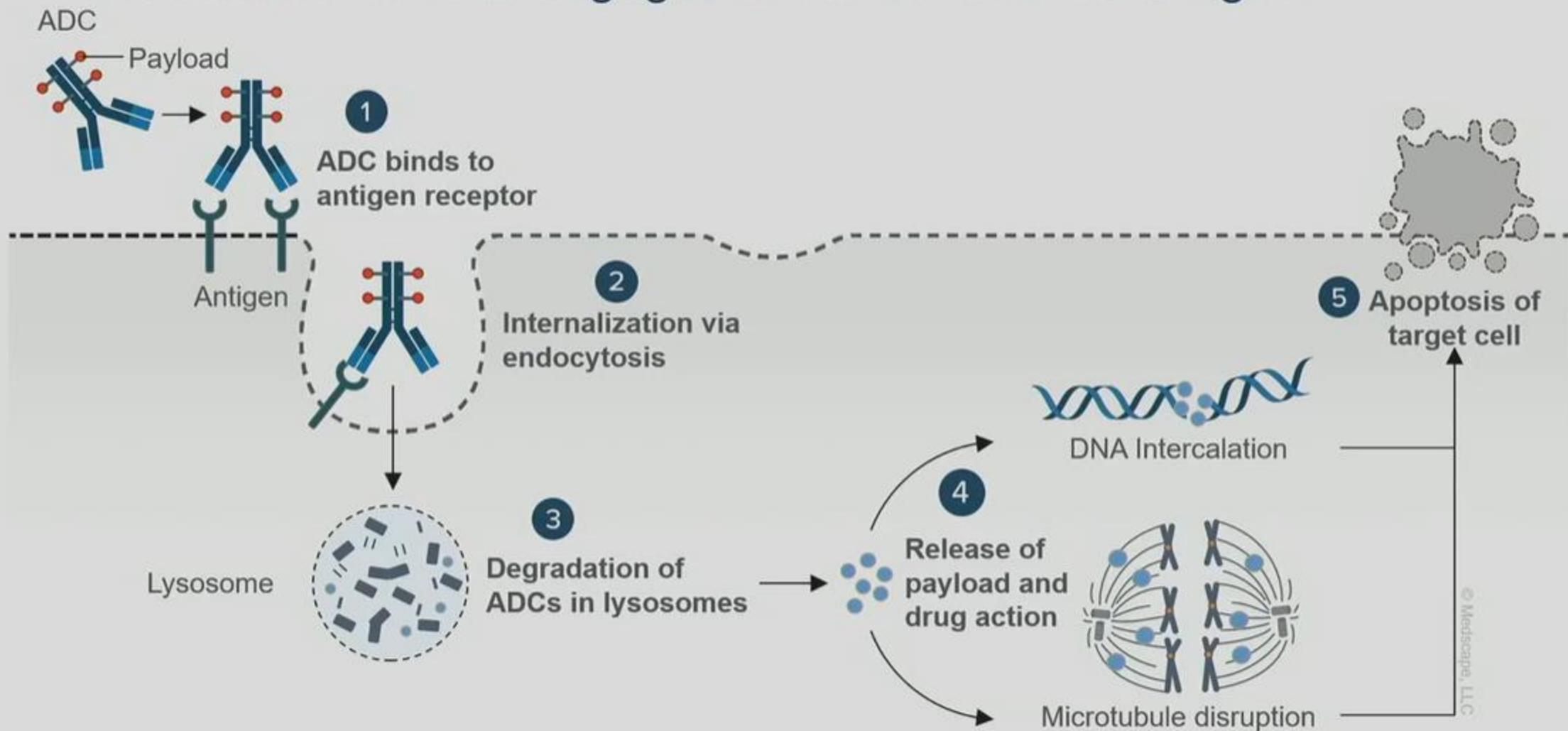



IMMUNOTHERAPY IN LUNG CANCER



Antibody-Drug Conjugates

Mechanism 1: mAB engagement of cell surface antigen



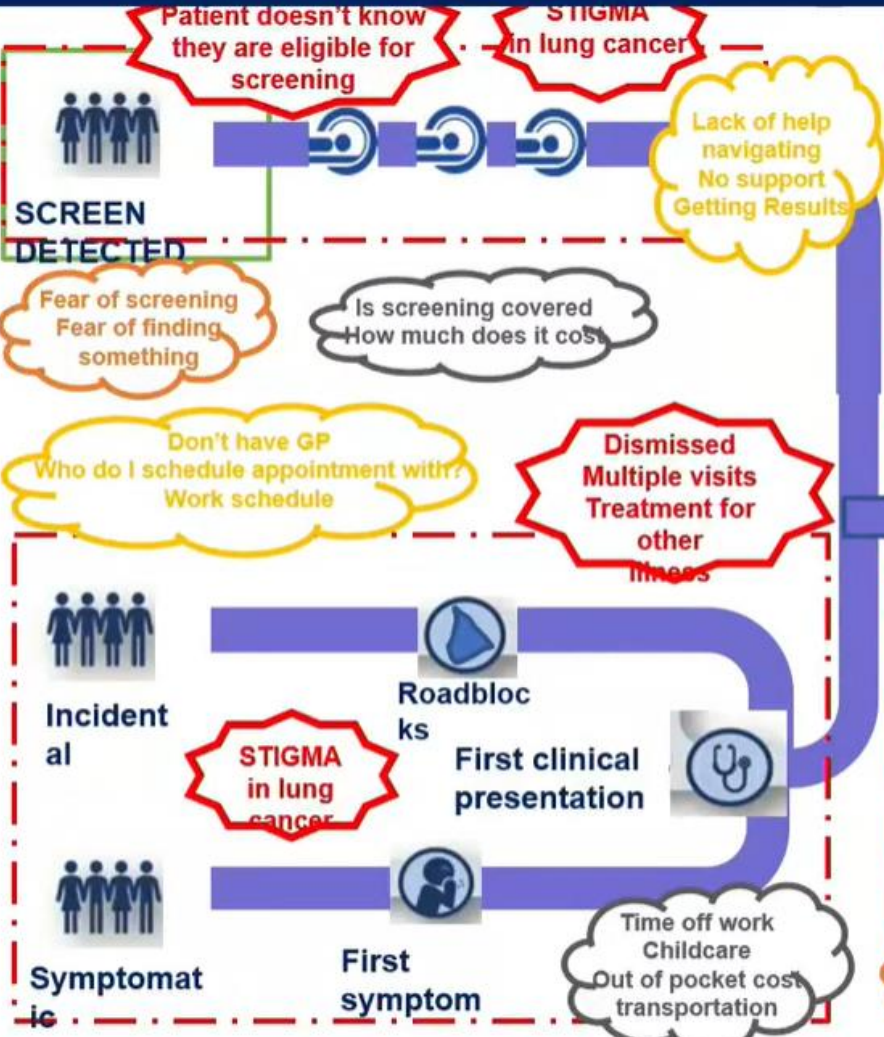
A vertical bar on the left side of the slide, transitioning from orange at the top to purple at the bottom.

To the caregivers and families, your unwavering support and boundless love provide the foundation upon which our patients can stand strong. Your role is immeasurable, and your dedication is a testament to the power of human connection.

Patients' Lives are **Complicated!!!**

Barrier to receiving treatment
Barrier to receiving support and survivorship
Barrier to receiving end of life care

Cancer Never Ends
Journey continues for many
Always Follow up
Manage Care
Very little support beyond medical
Unique and long-term effects



Multiple tests over many weeks and months

Anxiety, Confusion, What do I do next?

Don't have transportation to treatment

Lack of support for caregivers

Disconnect in communication, Who's the point person?

Try to understand diagnosis and what test results mean

Not treating the whole person

Insurance coverage, Lost wages, Cost of treatment, Cost of treating side effects

Hospitalized for symptoms of disease and/or side effects

Diagnosis

Traumatic, Am I going to die?, How do I tell my family?

Treatment and Survivorship

Support and resources not consistent

Symptomatic, More testing

Hospice, Other logistics

Adverse events, Complications, Severe Fatigue, Poor physical function

More time off work, Out of pocket cost

Fear, Uncertainty, What's next?

Pain Control, Need assistance

LONG wait for results difficult

Not part of treatment discussion

Not offered Supportive or Palliative care

Team not culturally aware, Food and housing security, Lack appropriate education materials in lay terms

Fragmented system, Have to self advocate and navigate

No SDM if patient doesn't understand

Life Happens!

- Caregiver for spouse, Other morbidities, Starting a family, Patient lives alone, Training for Marathon
- Family Reunion, Getting married, Trip planned out of country, Starting New Job, Take care of House
- Look after grandchildren, Insurance coverage, Coach children's sports, Sick child, Weekly social plans
- Moving, Pay Bills, Child's wedding

Qualify for Clinical Trial – start

End-of-Life care

Progression or recurrence

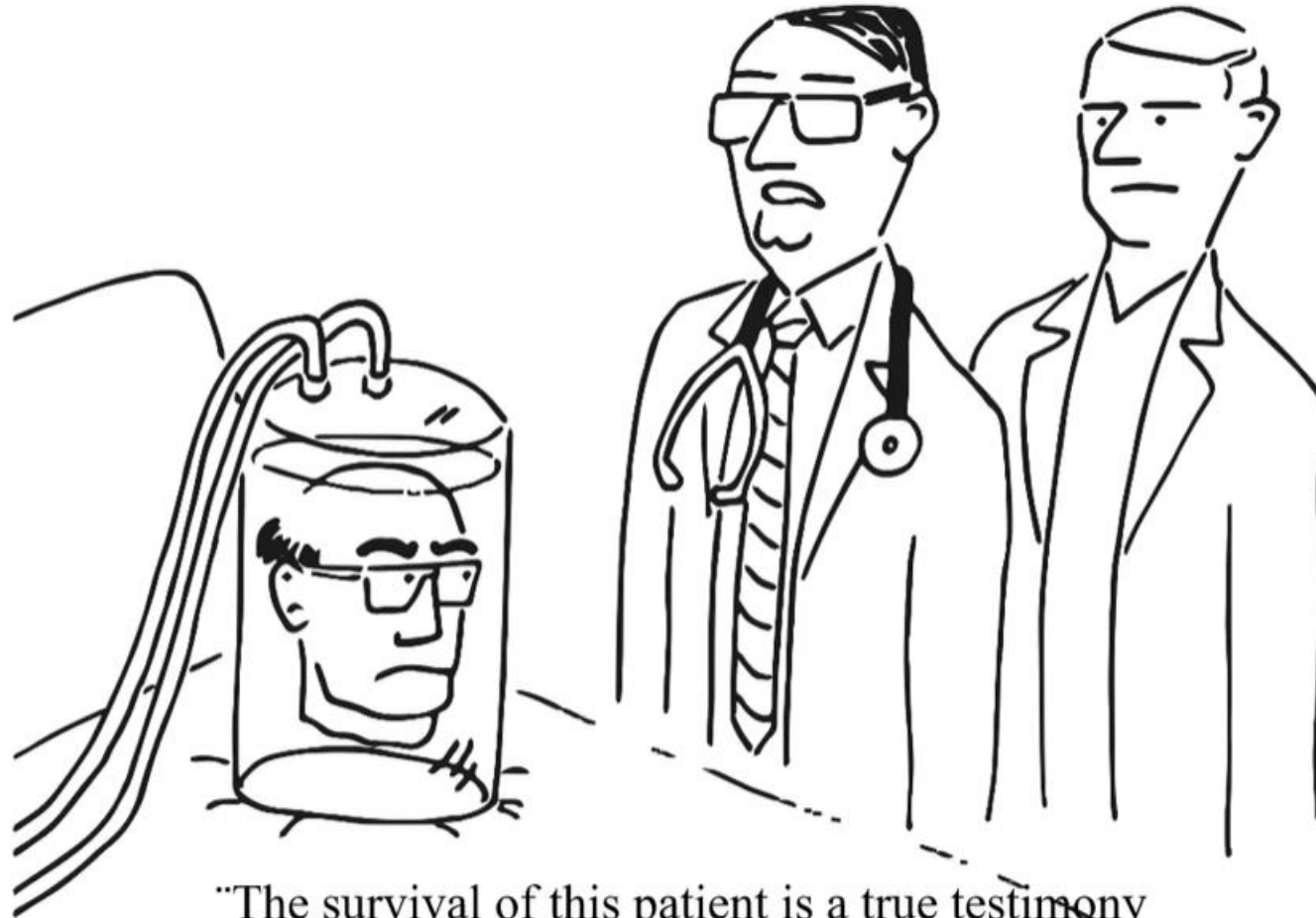
Don't want to burden my family, Don't want to suffer

Never had advanced care planning conversation

Hospice, Other logistics

Pain Control, Need assistance

Living Longer Doesn't Always Mean Living Better...



"The survival of this patient is a true testimony
to the blessing of modern science"

Cartoonist: Kresten Forsman

2023 ASCO
ANNUAL MEETING

#ASCO23

PRESENTED BY: J Feldman, D Rangachari, D Rodriguez-Abreu, J Rotow, G Veronesi
Early Stage to Metastatic Lung Cancer

Presentation is property of the author and ASCO. Permission required for reuse, contact permissions@asco.org

ASCO[®] AMERICAN SOCIETY OF
CLINICAL ONCOLOGY
KNOWLEDGE. CONTROL. CURE.

She looks GREAT!

Trouble with word retrieval/Focusing

Severe dry-eye

Mouth Sores/change in taste

Paronychia

Chest wall pain

SOB – loss of lung function

Fatigue

Joint pain/muscle aches

Dry Cracked Skin

Numbness/tingling

Lacerations on heels

Foggy

Brain

Anxiety/Depression

Dental problems

Dry mouth

Rash

Numbness/pain surgical sites

Diarrhea/nausea

Acid Reflux

Loss of Muscle Mass

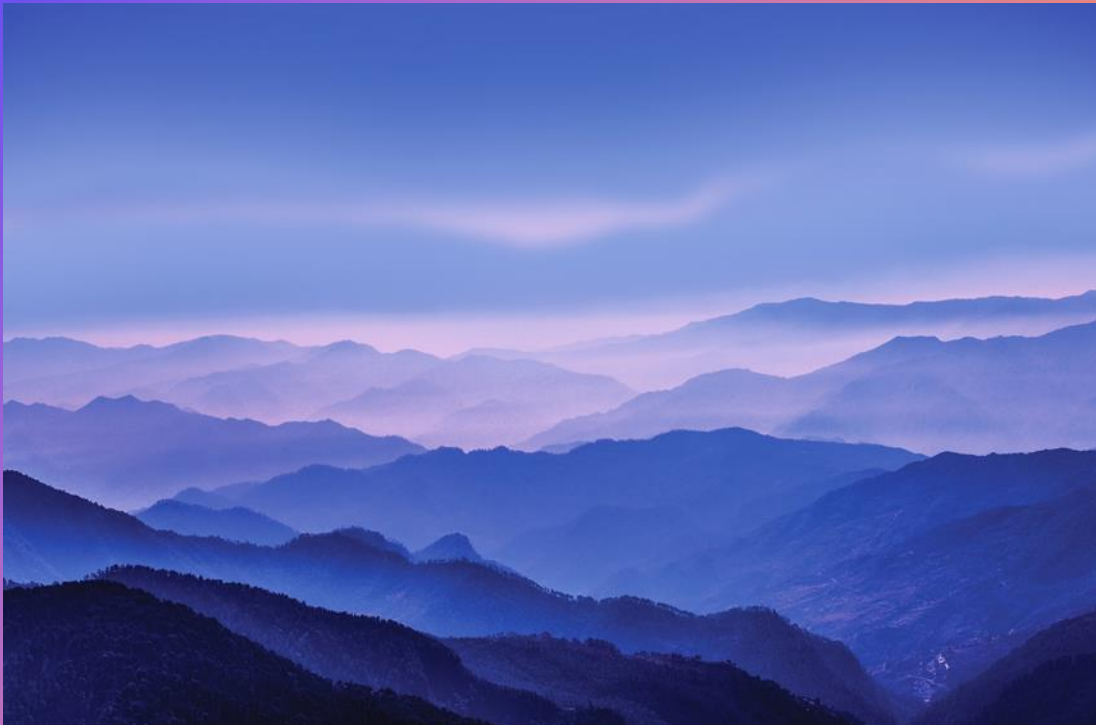
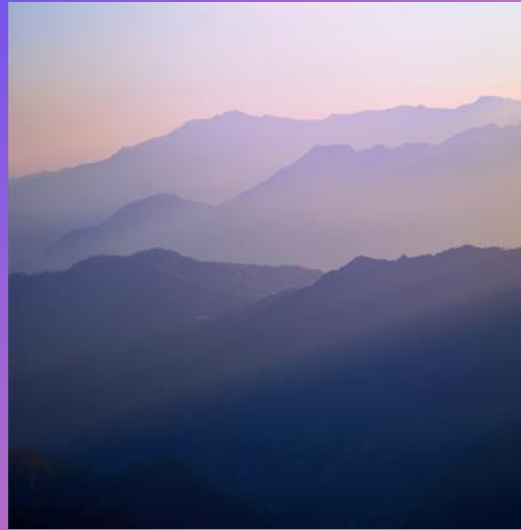
Sensitive skin

Random loss of toenails

How my care team and others perceive I feel

How I actually feel

Tolerable is Relative!



Summary

- Lung Cancer is the leading cause of cancer mortality among men and women.
- Smoking is still the main cause of lung cancer among smokers but Radon, Environmental pollution and other occupations like painters are leading causes of like cancer in non-smokers especially young women.
- LDCT screening is approved for lung cancer screening in high risk group but non-smoker has no screening test and discovered only in late stage.
- There is improvement in lung cancer survival with LDCT screening and new treatment options like Target Therapy and Immunotherapy.
- Treatment of Lung Cancer patients by a lung Cancer specialist and a Multidisciplinary approach has been proven in many studies to improve outcome for these patients.



+



o



.



THANK YOU